

Brochure

# VIAVI

## SmartClass 4800

Tool of choice for all-in-one service testing

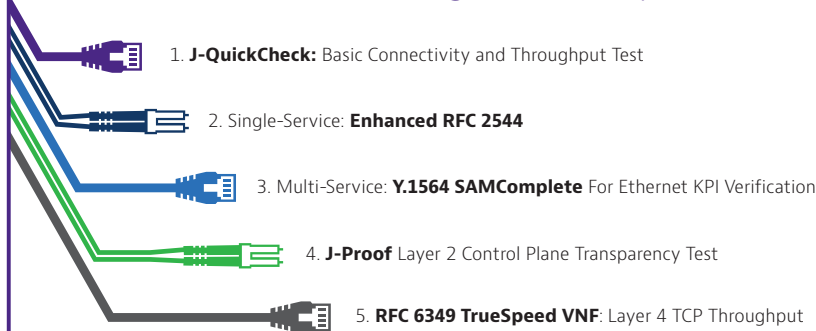
Optimized for business services installation teams, the SmartClass 4800 is the modern tool for ensuring data and voice services achieve expected key performance indicators (KPI).



With the ability to test electrical and optical Ethernet links as well T1 and E1 interfaces, the SmartClass 4800 allows technicians to test all common business class interfaces. Technicians can test the quality of voice services regardless of whether they are delivered via VoIP or PRI.

The industry's smallest handheld instrument can test throughout the service life cycle, including service activation, troubleshooting, and maintenance. Advanced Ethernet test features such as TrueSpeed VNF per RFC 6349 and, J-Profiler help field technicians test their networks faster and more accurately than ever before.

### Best Practice Workflow (Single and Multiple Services):



This test workflow is applicable to Ethernet Business Services and Wireless Backhaul network topologies.



### Key Benefits

- Optimized for field use with a multitouch screen, scripted workflows, and clear results
- Supports efficient best practices with repeatable methods and procedures

### Key Features

- Electrical (10/100/1000) and optical (100M, 1GE, 10GE) Ethernet interfaces
- Automated, enhanced RFC 2544 and SAMComplete testing per ITU-T Y.1564
- Integrated burst testing approach per MEF 34 and RFC 6349 TrueSpeed VNF™ TCP throughput testing
- Compatible with VIAVI fiber microscopes, and optical power meters
- Supports the Datacom Expansion Module (DEM), which expands the testing of legacy technologies, specifically Datacom serial interfaces

### Applications

- Business services installations, service activation and troubleshooting
- Mobile and backhaul characterization, validation, and troubleshooting

## TrueSAM Saves Valuable Service Activation Time

Test better and quicker with automated tests combined into one ultimate installation tool:

- J-QuickCheck — a fast, automated test (RFC 2544, Y.1564) for validating end-to-end and auto-negotiation configuration
- Enhanced RFC 2544 — an automated turn-up test for validating key performance indicators (KPIs)/concurrently measuring SLAs such as throughput, frame delay, delay variation, frame loss, and committed burst size (CBS) — optional
- Y.1564 SAMComplete — an automated service verification test that speeds the installation of multiple classes of services (COS)
- TrueSpeed VNF per RFC 6349 — an automated, standards-based test that can save up to 25% of operating expenses (OpEx) and reveals the reason for slow file downloads, eliminating finger-pointing
- Interoperable with VIAVI Fusion for throughput testing, including TrueSpeed VNF and Fusion QT-600

## Optimized for Field Technicians

The SmartClass 4800 makes testing Ethernet and voice services easy:

- All test interfaces are readily available
- Compact form factor for easy portability: 7 x 9.5 x 3 in (17.8 x 24.1 x 7.62 cm)
- Large 7 in multi-touch display
- Tablet-like interface for easy navigation through test information and advanced workflows
- Integrated WiFi and Bluetooth lets you easily connect test sets and offload results

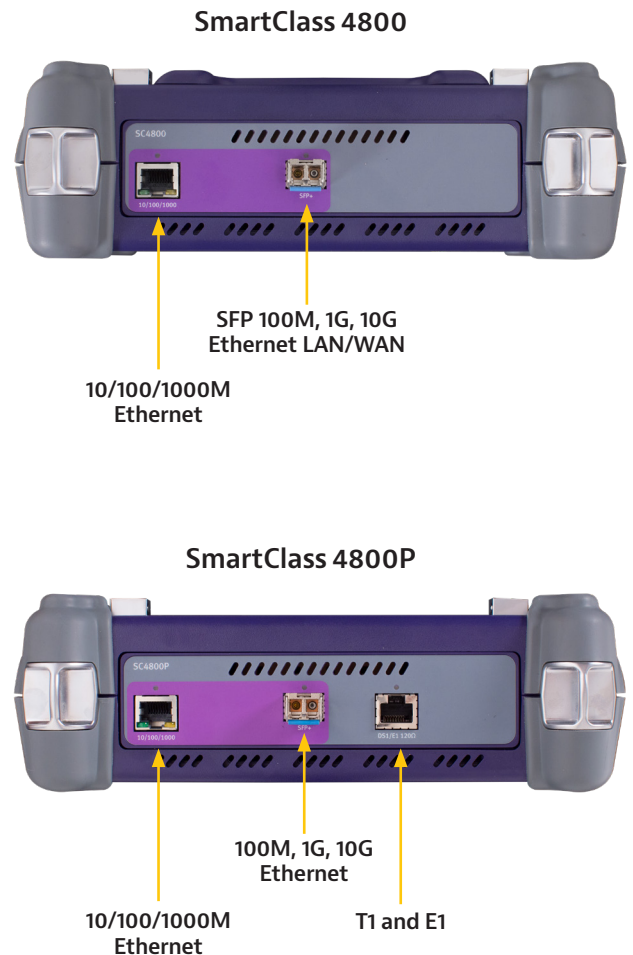
## Compatible with VIAVI Solutions Fiber Test Tools

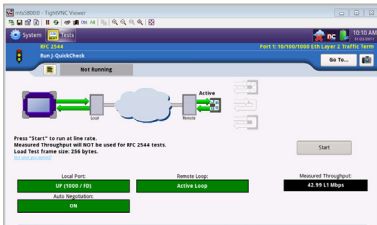
The SmartClass 4800 is compatible with:

- The P5000i and FiberChek fiber microscope for connector end-face inspection and analysis
- MP-Series optical power meters for optical power and loss measurements

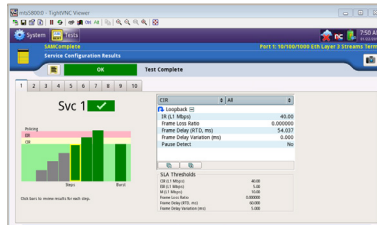
## Optimized for Easy Field Use

- Fixed test interfaces eliminate loose pluggable modules
- LEDs indicate plug-ins for tests
- A streamlined user interface provides simple pass/fail, green/red results
- Extended battery life enables longer test times
- Boots up rapidly from power-on to test start

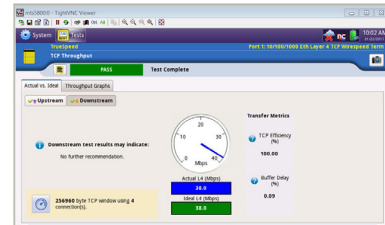




Enhanced RFC 2544 with J-QuickCheck



SAMComplete per ITU-T Y.1564

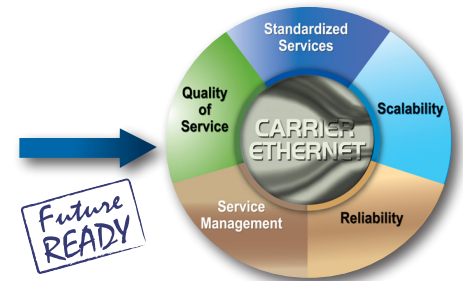


Fusion TrueSpeed VNF per RFC 6349

## Enables Network Evolution — Today and Tomorrow

The SmartClass 4800 meets leading-edge, carrier-grade Ethernet requirements:

- Ensures reliability with link and service OAM (IEEE 802.3ah, 802.1ag, and ITU-T Y.1731)
- Validates network scalability with VLAN, Q-in-Q, MAC-in-MAC, MPLS, and VPLS tunnelling technologies
- Full-featured VoIP and IP video turn-up and troubleshooting tests
- Supports packet transport network (PTN) evolution with MPLS-TP technology



Source: Metro Ethernet Forum (MEF)

## Part of the Leading T-BERD/MTS Test Portfolio

Activate services more quickly and accurately

Reduce mean time to repair (MTTR) on network problems

Test the widest range of traditional and emerging telecom interfaces



Common Application Base

Same user interface + same results + same methods and procedures

## StrataSync

### Empower Your Assets

StrataSync is a hosted, cloud-enabled solution for managing assets, configurations, and test data on VIAVI instruments. It ensures that all instrument software is current and the latest options are installed. StrataSync lets you manage inventory, test results, and performance data anywhere with browser-based ease while it also improves technician and instrument efficiency. StrataSync manages and tracks test instruments, collects and analyzes results from the entire network, and it informs and trains the workforce.



VIAVI StrataSync enabled

# VIAMI Care Support Plans




## Increase your productivity for up to 5 years with optional VIAMI Care Support Plans:

- Maximize your time with on-demand training, priority technical application support and rapid service.
- Maintain your equipment for peak performance at a low, predictable cost.

Plan availability depends on product and region. Not all plans are available for each product or in every region. To find out which VIAMI Care Support Plan options are available for this product in your region, contact your local representative or visit: [viavisolutions.com/viavicareplan](https://viavisolutions.com/viavicareplan)

### Features

\*5-year plans only

Plan	Objective	Technical Assistance	Factory Repair	Priority Service	Self-paced Training	5 Year Battery and Bag Coverage	Factory Calibration	Accessory Coverage	Express Loaner
 BronzeCare	Technician Efficiency	Premium	✓	✓	✓				
 SilverCare	Maintenance & Measurement Accuracy	Premium	✓	✓	✓	✓*	✓		
 MaxCare	High Availability	Premium	✓	✓	✓	✓*	✓	✓	✓

